

Chapter 15 Communication Control

There are two types of Communication modes: Single mode and Multi-mode.

Single mode(Recommended): One LED screen for one LED project,(most of them work in single mode).

Multi-mode: several LED screen with same pixels (including Width and Height) for one LED project.

Recommend to use single-screen mode. Click on “Options” button and select “Software Setup”. Then select communication parameter page, as shown in image 15-1.

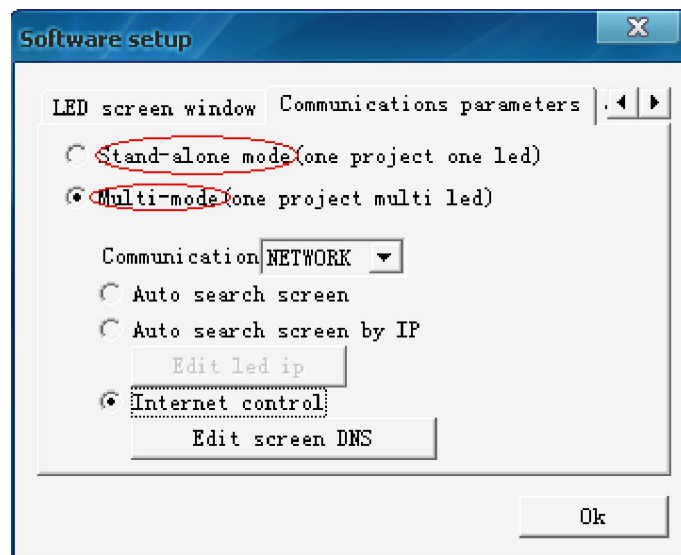


Figure 15-1

15.1 Single-screen mode

Under single-screen mode, there are three communication types : Network, serial port and U-disk, as shown in image 15-2.



Figure 15-2

15.1.1 Network Communication

Select communication type “Network”. As shown in image 15-3, LED IP address: The real IP address of LED screen. Computer IP: Local IP address. Need to ensure that network segment of LED IP is the same with that of computer. For example, LED IP: 192.168.0.xxx, computer IP: 192.168.0.237. The two IP addresses are both in the 0 network segment.

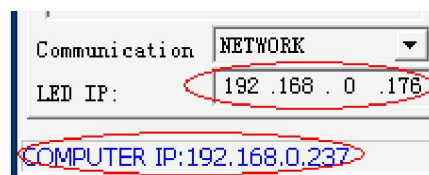


Figure 15-3

When connecting computer with controller correctly, users could send control commands. As shown in image 15-4.

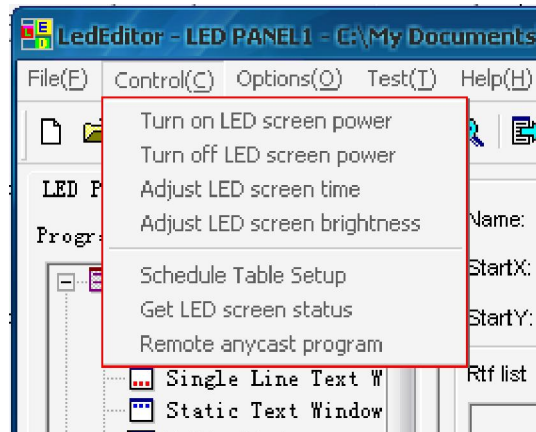


Figure 15-4

If sending control command successfully, tip message will pop up in lower right corner of PC desktop. As shown in image 15-5.

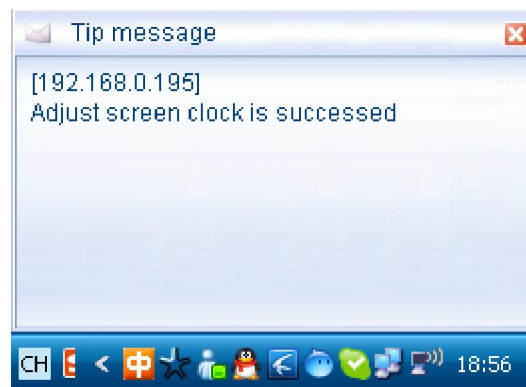


Figure 15-5

15.1.2 COM (serial port) Communication

Communication type: Select “COM”, as shown in image 15-6.

Computer serial port: Select the Com which connects with LED screen.

Baud rate: Select baud rate of LED screen serial port, make sure that baud rate of LED screen and computer should be the same.

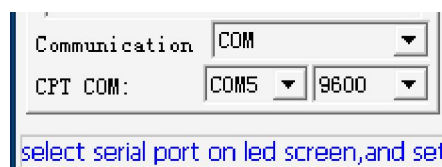


Figure 15-6

After connecting computer with controller correctly, users could send control commands. As shown in image 15-4.

If sending control command successfully, tip message will pop up in lower right corner of PC desktop. As shown in image 15-5.

15.1.3 U-disk Communication

As a communication media, U-disk has two kinds of usages, as shown in image 15-7 in below:

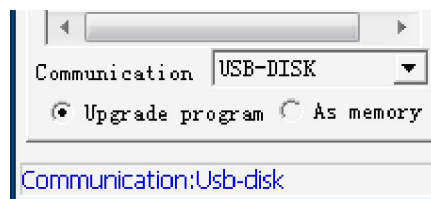


Image15-7

Upgrading programs:

Firstly, plug u-disk into computer, sending programs to U-disk.

Secondly, plug u-disk into controller then copy all programs to the controller automatically. After finished please pull it out.

Upgrading storage:

When program size is larger than 500Mbytes, you need to upgrade storage of the controller. Firstly, plug the u-disk into computer, sending programs to u-disk, pull it out after finished.

Secondly, plug u-disk into controller then LED sign will display all programs automatically, do not pull it out.

15.2 Multi-screen mode

Under multi mode, there are four communication types : network, serial port, U-disk, GPRS, as shown in image 15-9.

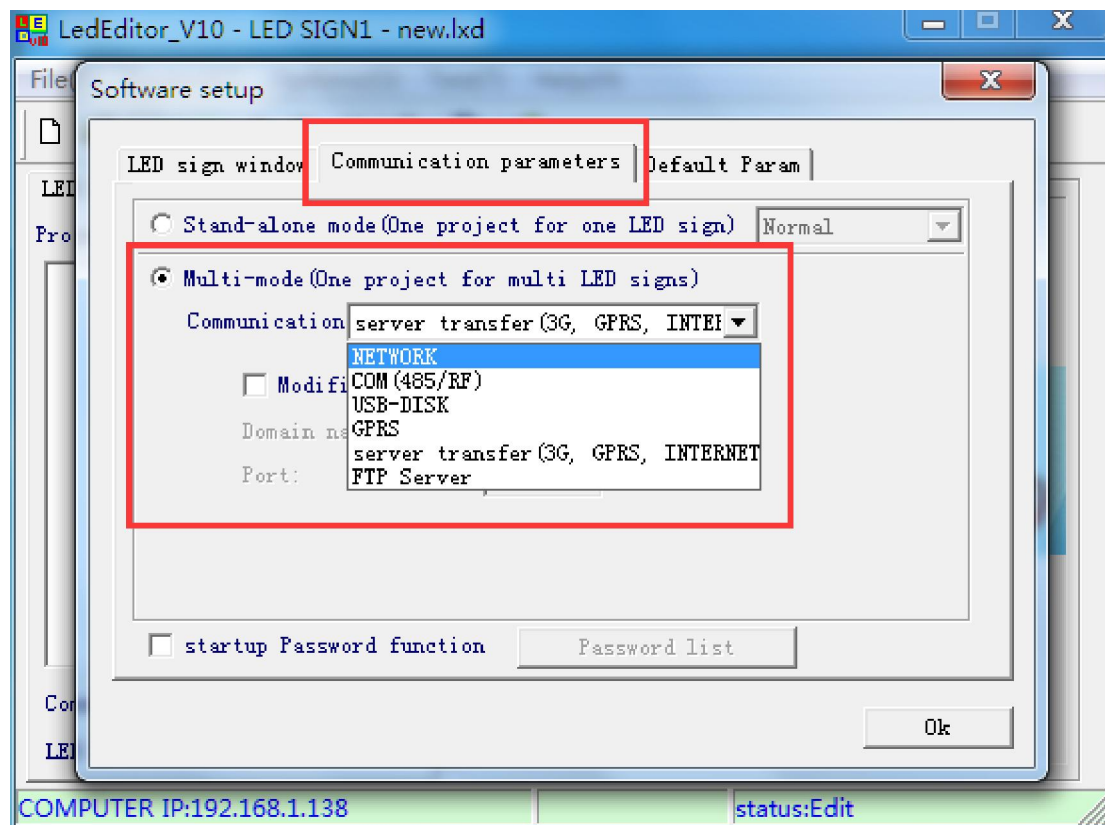


Figure 15-9

15.2.1 Network communication

If you already know LED sign IP address then please click on “Auto search LED sign by IP”à “Edit IP”, as shown in image 15-10 and 15-11 in below:

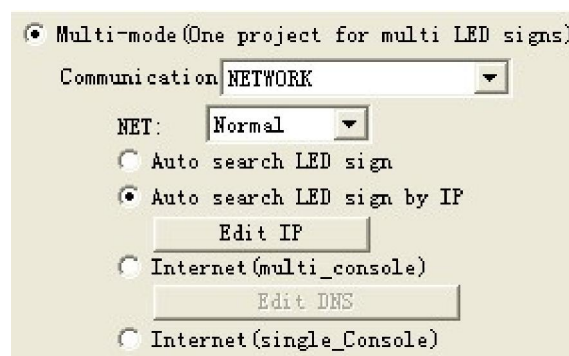


Figure 15-10

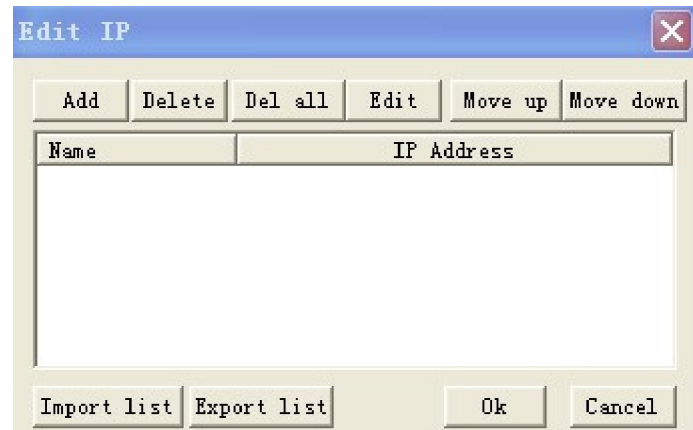


Image 15-11

If you do not know LED sign IP address but all of them in the same LAN, then you need to do these steps: Menu bar → Options → Software Setup → Communicate parameters → Multi-mode → Auto search LED sign → OK, as shown in image 15-12 in below:

Then click on “Send” button, a communication window will appear, as shown in image 15-13 in below:



Image 15-12

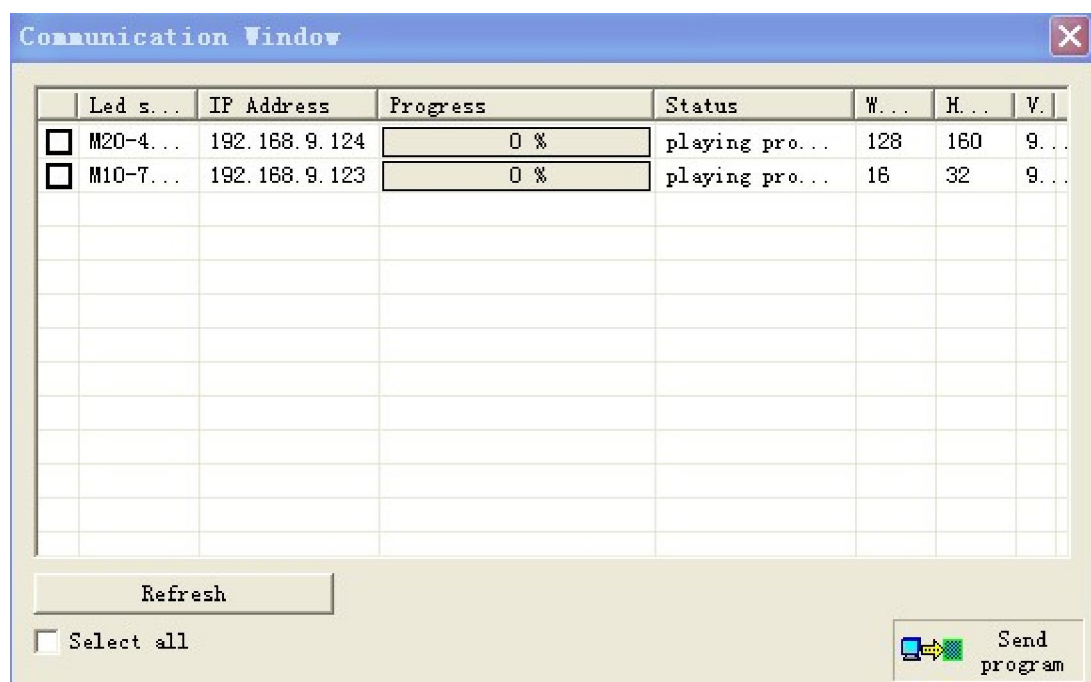


Figure 15-13

15.2.2 Serial port communication

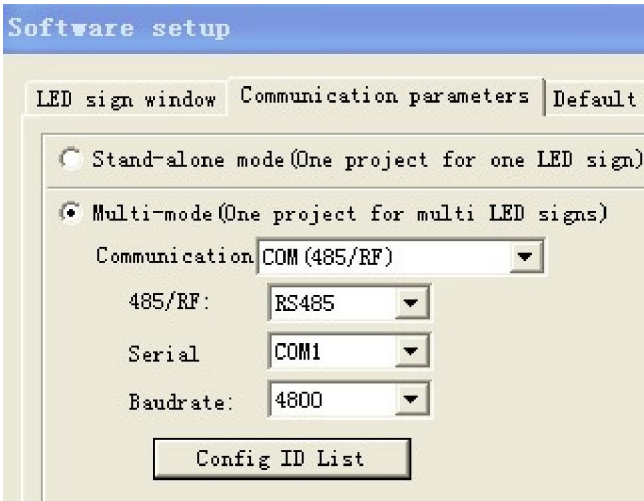


Figure 15-15

If there are several LED screens, need to add each LED screen's ID. As shown in image 15-16.

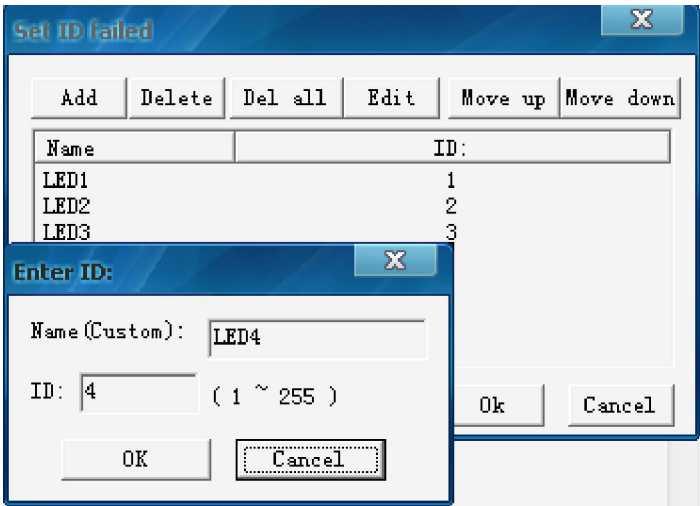


Figure 15-16

Its operations about control command are the same as network communication.

15.2.3 U-disk Communication

As shown in image 15-17. There are two communication types: Copy program to LED screen and Expand storage, play program in U-disk.

Its function is the same as that of single-screen mode.

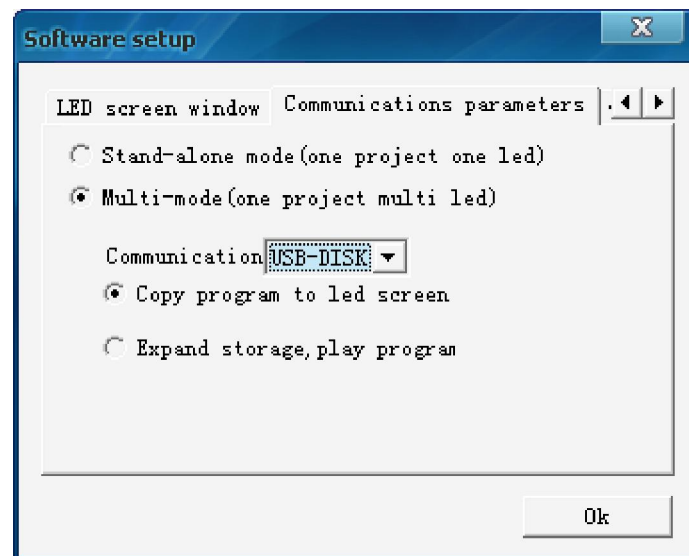


Figure 15-17

15.2.4 Server communication

Click on "Options" → "Software Setup" → Communication parameters → Multi-mode → then choose Server transfer, as shown in image 15-18 in below:

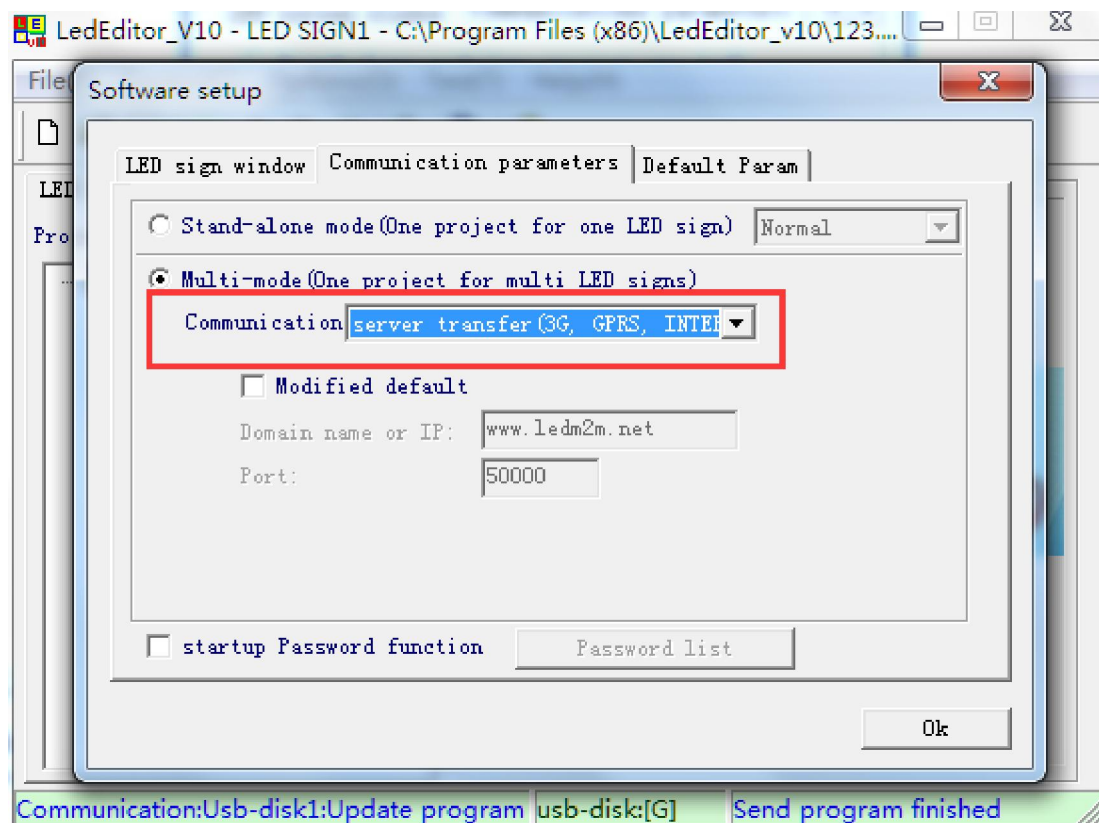


Image 15-18

Please press OK and send will be ok.

15.2.5 FTP server communication

Click on “Options”à”Software Setup”à Communication parametersà Multi-modeà then choose FTP server, as shown in image 15-19 in below:

